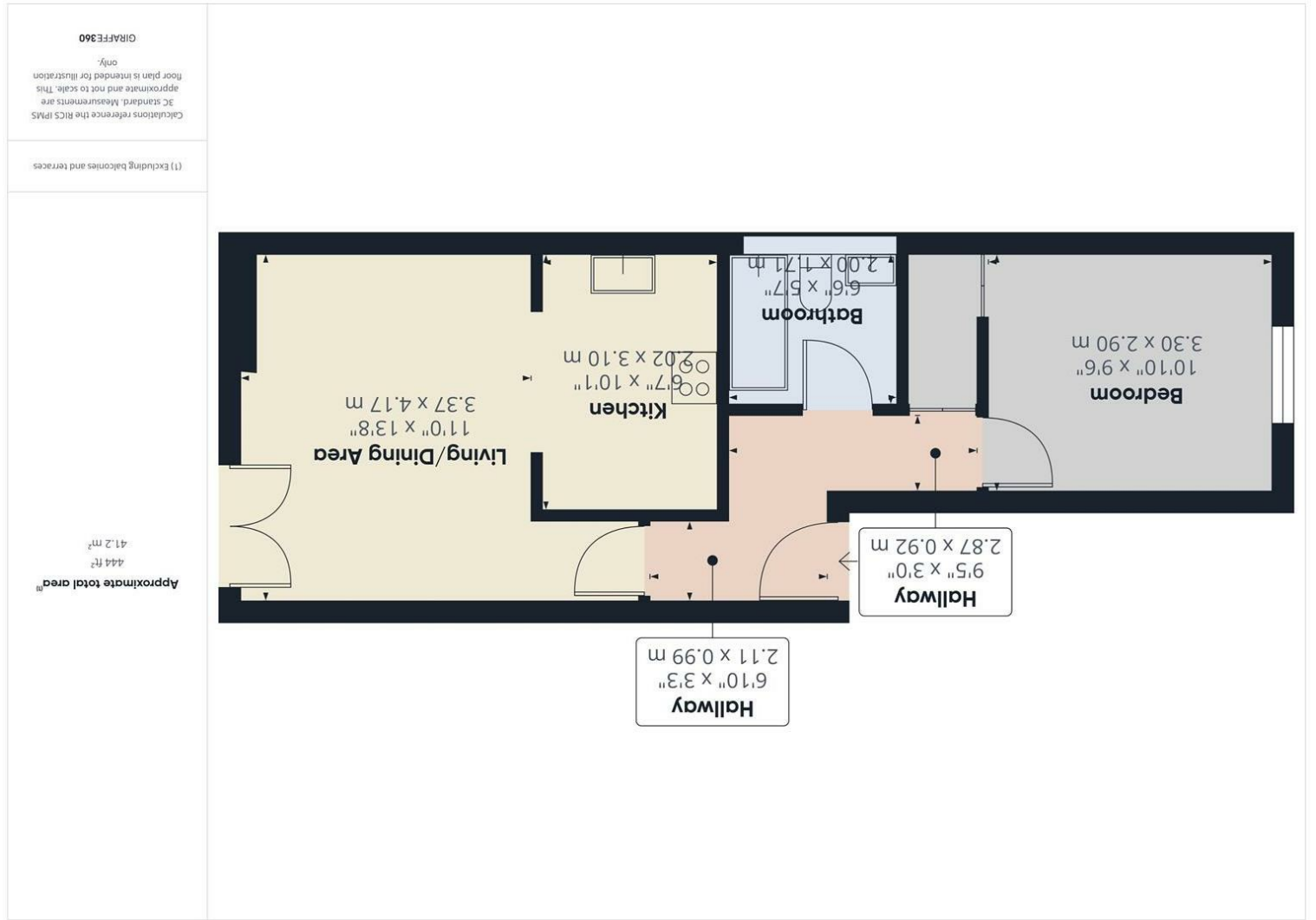


Consumer Protection from Unfair Trading Regulations 2008 We have not tested any apparatus, equipment, fittings or services and so cannot verify that they are in working order or fit for purpose. You are advised to obtain verification from your solicitor or surveyor. References to the tenure of a property are based on information supplied by the seller. We have not had sight of the title documents and a buyer is advised to obtain verification from their solicitor. Items shown in photographs are not included unless specifically mentioned within the sales particulars, but may be available by separate negotiation. We advise you to book an appointment to view before embarking on any journey to see a property, and check its availability.



Entrance Hall
 Living/Dining Area
 11'0" x 13'8" (3.37 x 4.17)
 Kitchen
 6'7" x 10'2" (2.02 x 3.10)
 Bedroom
 10'9" x 9'6" (3.30 x 2.90)
 Bathroom
 6'6" x 5'7" (2.00 x 1.71)
 Leases - 999 years from 1 January 1989
 Service Charge - £113.53 per month



- Recently renovated first floor apartment with wooded views
- Living/dining space
- Modern kitchen
- Double bedroom
- Bathroom suit in white
- New floor coverings
- Allocated parking
- No chain

PROPERTY TYPE Flat
BEDROOMS 1
RECEPTION ROOMS 1
BATHROOMS 1
EPC RATING C
COUNCIL TAX BAND A



Recently renovated first floor apartment with commanding wooded views.

Entrance hallway, living/dining space and modern high gloss kitchen, one double bedroom and a bathroom suite in white.

Recently redecorated with new floor coverings - an inspection is recommended.

Allocated parking



the location

Set on the ever popular Beaufort Road, with wonderful views from the living space over green woodland, which in turn leads down to Crews Hole and Conham river park. St George park and Church Road, with its range of independent shops, bars and restaurants, are but a short walk away. Bristol 1.8 miles Bath 10.5 miles



*Offered for sale with
no onward chain*

just a thought...

If you hadn't considered a modern apartment before, this one could change your mind! Fabulous location, close to green, wooded and riverside walks, yet having all the advantages of living in the city, with a bustling high street and the amazing Victorian St George park, all within easy striking distance. Visit this property and prepare to be surprised!